

PACO06914

---

## Product Information

**Size:**

50ug

**Reactivity:**

Human, Rat

**Source:**

Rabbit

**Isotype:**

IgG

**Applications:**

ELISA, WB

**Recommended dilutions:**

ELISA:1:10000, WB:1:500-1:2000

**Protein Background:**

**Gene ID:**

NCR3

**Uniprot**

O14931

**Synonyms:**

NCR3; 1C7; LY117; Natural cytotoxicity triggering receptor 3; Activating natural killer receptor p30; Natural killer cell p30-related protein; NK-p30; NKp30; CD337

**Immunogen:**

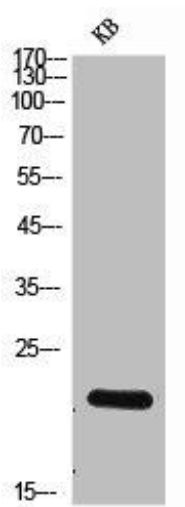
Synthesized peptide derived from the Internal region of human NKp30.

**Storage:**

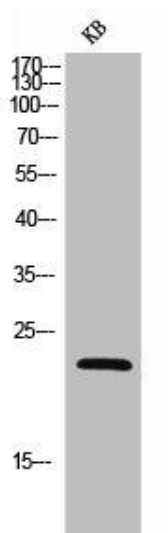
Liquid in PBS containing 50% glycerol, 0.5% BSA and 0.02% sodium azide.

## Product Images

---



Western Blot analysis of KB cells using NKp30 Polyclonal Antibody.



Western Blot analysis of KB cells using NKp30 Polyclonal Antibody.