

CD300LD Antibody



PACO06918

Product Information

Size:

50ug

Reactivity:

Human

Source:

Rabbit

Isotype:

IgG

Applications:

ELISA, WB

Recommended dilutions:

ELISA:1:10000, WB:1:500-1:2000

Protein Background:**Gene ID:**

CD300LD

Uniprot

Q6UXZ3

Synonyms:

CD300LD; CD300D; CMRF35A4; CMRF35-like molecule 4; CLM-4; CD300 antigen-like family member D; CMRF35-A4; CD300d

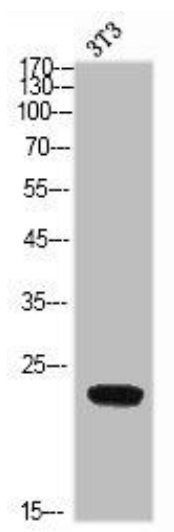
Immunogen:

Synthesized peptide derived from the Internal region of human CD300d.

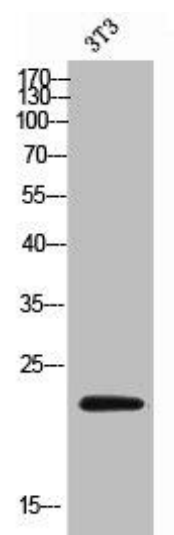
Storage:

Liquid in PBS containing 50% glycerol, 0.5% BSA and 0.02% sodium azide.

Product Images



Western Blot analysis of NIH-3T3 cells using CD300d Polyclonal Antibody.



Western Blot analysis of 3T3 cells using CD300d Polyclonal Antibody.