

# GDF6 Antibody



PACO06926

---

## Product Information

**Size:**

50ug

**Reactivity:**

Human, Mouse, Rat

**Source:**

Rabbit

**Isotype:**

IgG

**Applications:**

ELISA, WB

**Recommended dilutions:**

ELISA:1:10000, WB:1:500-1:2000

**Protein Background:**

**Gene ID:**

GDF6

**Uniprot**

Q6KF10

**Synonyms:**

GDF6; GDF16; Growth/differentiation factor 6; GDF-6; Growth/differentiation factor 16

**Immunogen:**

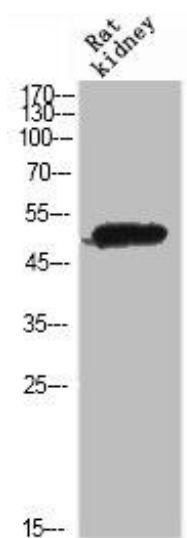
Synthesized peptide derived from the Internal region of human GDF-6.

**Storage:**

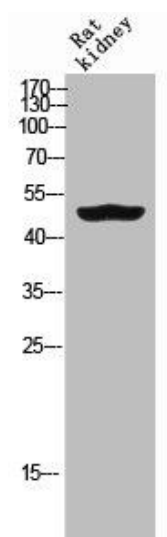
Liquid in PBS containing 50% glycerol, 0.5% BSA and 0.02% sodium azide.

## Product Images

---



Western Blot analysis of rat kidney cells using GDF-6 Polyclonal Antibody.



Western Blot analysis of RAT-kidney cells using GDF-6 Polyclonal Antibody.