

GDF7 Antibody



PACO06927

Product Information

Size:

50ug

Reactivity:

Human, Mouse, Rat

Source:

Rabbit

Isotype:

IgG

Applications:

ELISA, WB

Recommended dilutions:

ELISA:1:10000, WB:1:500-1:2000

Protein Background:

Gene ID:

GDF7

Uniprot

Q7Z4P5

Synonyms:

GDF7; Growth/differentiation factor 7; GDF-7

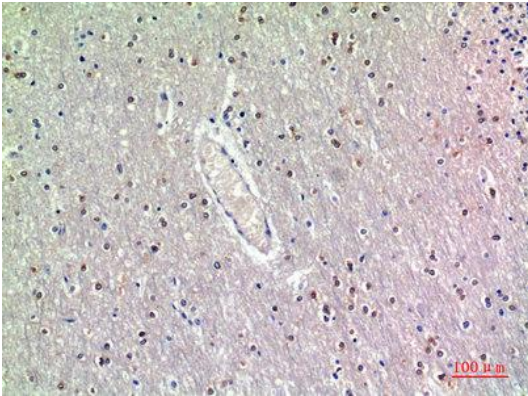
Immunogen:

Synthesized peptide derived from the Internal region of human GDF-7.

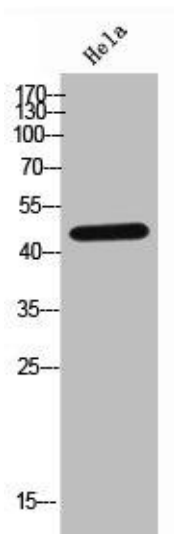
Storage:

Liquid in PBS containing 50% glycerol, 0.5% BSA and 0.02% sodium azide.

Product Images



Immunohistochemical analysis of paraffin-embedded human-brain, antibody was diluted at 1:200.



Western Blot analysis of HELA cells using GDF-7 Polyclonal Antibody.