

EPGN Antibody



PACO06928

Product Information

Size:

50ug

Reactivity:

Human

Source:

Rabbit

Isotype:

IgG

Applications:

ELISA, WB

Recommended dilutions:

ELISA:1:10000, WB:1:500-1:2000

Protein Background:

Gene ID:

EPGN

Uniprot

Q6UW88

Synonyms:

EPGN; Epigen; Epithelial mitogen; EPG

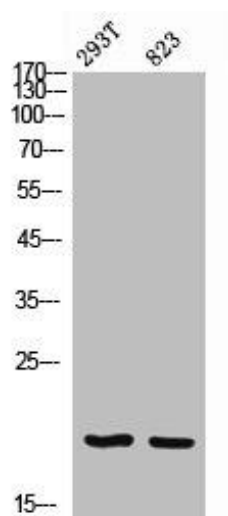
Immunogen:

Synthesized peptide derived from the Internal region of human Epigen.

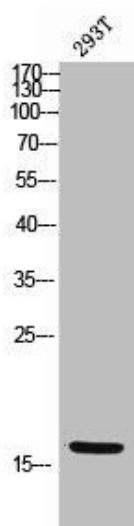
Storage:

Liquid in PBS containing 50% glycerol, 0.5% BSA and 0.02% sodium azide.

Product Images



Western Blot analysis of 293T 823 cells using Epigen Polyclonal Antibody.



Western Blot analysis of 293T cells using Epigen Polyclonal Antibody.