

PACO06937

---

## Product Information

**Size:**

50ug

**Reactivity:**

Human, Mouse, Rat

**Source:**

Rabbit

**Isotype:**

IgG

**Applications:**

ELISA, WB, IHC, IF

**Recommended dilutions:**

ELISA:1:20000, WB:1:500-1:2000,  
IHC:1:100-1:300, IF:1:200-1:1000

**Protein Background:**

**Gene ID:**

CEBPD/CEBPE

**Uniprot**

P49716/Q15744

**Synonyms:**

CEBPD; CCAAT/enhancer-binding protein delta; C/EBP delta; Nuclear factor NF-IL6-beta; NF-IL6-beta; CEBPE; CCAAT/enhancer-binding protein epsilon; C/EBP epsilon

**Immunogen:**

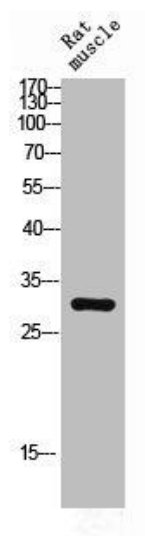
Synthesized peptide derived from the C-terminal region of human C/EBP delta / epsilon.

**Storage:**

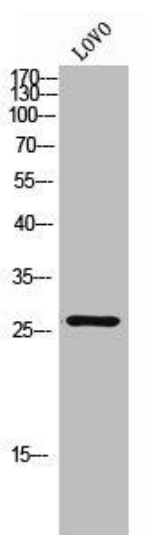
Liquid in PBS containing 50% glycerol, 0.5% BSA and 0.02% sodium azide.

## Product Images

---



Western Blot analysis of RAT-MUSCLE cells using C/EBP delta / epsilon Polyclonal Antibody.



Western Blot analysis of LOVO cells using C/EBP delta / epsilon Polyclonal Antibody.