

Phospho-TENC1 (Y483) Antibody



PACO06961

Product Information

Size:

50ug

Reactivity:

Human, Mouse

Source:

Rabbit

Isotype:

IgG

Applications:

ELISA, WB

Recommended dilutions:

ELISA:1:10000, WB:1:500-1:2000

Protein Background:**Gene ID:**

TNS2

Uniprot

Q63HR2

Synonyms:

TENC1; KIAA1075; TNS2; Tensin-like C1 domain-containing phosphatase; C1 domain-containing phosphatase and tensin homolog; C1-TEN; Tensin-2

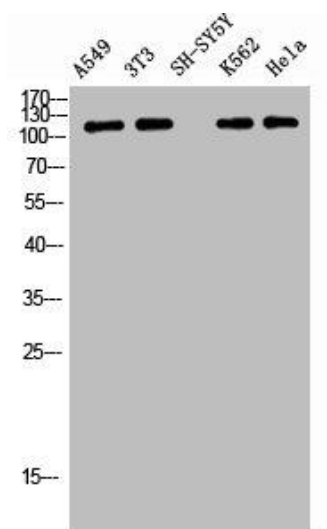
Immunogen:

Synthesized peptide derived from human Tensin-2 around the phosphorylation site of Y483.

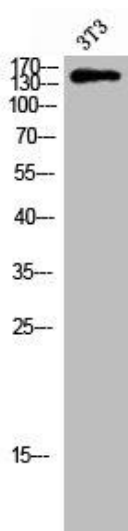
Storage:

Liquid in PBS containing 50% glycerol, 0.5% BSA and 0.02% sodium azide.

Product Images



Western Blot analysis of A549 NIH-3T3 SH-SY5Y K562 HELA cells using Phospho-Tensin-2 (Y483) Polyclonal Antibody.



Western Blot analysis of 3T3 cells using Phospho-Tensin-2 (Y483) Polyclonal Antibody.