

KRT14/KRT16 Antibody



PACO06965

Product Information

Size:

50ug

Reactivity:

Human, Mouse, Rat

Source:

Rabbit

Isotype:

IgG

Applications:

ELISA, WB, IHC, IF

Recommended dilutions:

ELISA:1:20000, WB:1:500-1:2000,
IHC:1:100-1:300, IF:1:200-1:1000

Protein Background:**Gene ID:**

KRT14/KRT16

Uniprot

P02533/P08779

Synonyms:

KRT14; Keratin, type I cytoskeletal 14; Cytokeratin-14; CK-14; Keratin-14; K14; KRT16;
KRT16A; Keratin, type I cytoskeletal 16; Cytokeratin-16; CK-16; Keratin-16; K16

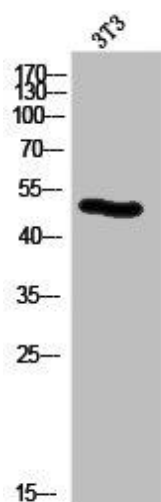
Immunogen:

Synthesized peptide derived from the N-terminal region of human Cytokeratin 14/16.

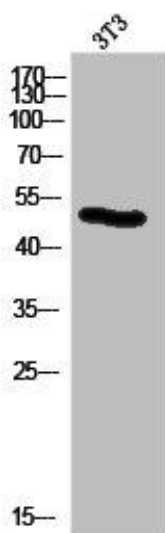
Storage:

Liquid in PBS containing 50% glycerol, 0.5% BSA and 0.02% sodium azide.

Product Images



Western Blot analysis of NIH-3T3 cells using Cytokeratin 14/16 Polyclonal Antibody.



Western Blot analysis of 3T3 cells using Cytokeratin 14/16 Polyclonal Antibody.