

# NOL8 Antibody



PACO06971

---

## Product Information

**Size:**

50ug

**Reactivity:**

Human

**Source:**

Rabbit

**Isotype:**

IgG

**Applications:**

ELISA, WB, IHC

**Recommended dilutions:**

ELISA:1:20000, WB:1:500-1:2000,  
IHC:1:100-1:300

**Protein Background:****Gene ID:**

NOL8

**Uniprot**

Q76FK4

**Synonyms:**

NOL8; C9orf34; NOP132; Nucleolar protein 8; Nucleolar protein Nop132

**Immunogen:**

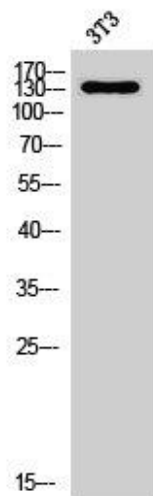
Synthesized peptide derived from the C-terminal region of human Nop132.

**Storage:**

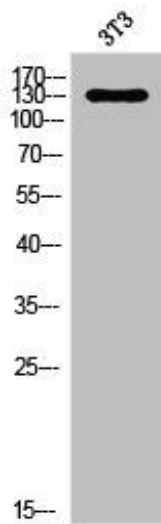
Liquid in PBS containing 50% glycerol, 0.5% BSA and 0.02% sodium azide.

## Product Images

---



Western Blot analysis of NIH-3T3 cells using Nop132 Polyclonal Antibody.



Western Blot analysis of 3T3 cells using Nop132 Polyclonal Antibody.