

# Phospho-NCF1 (S345) Antibody



PACO06983

---

## Product Information

**Size:**

50ug

**Reactivity:**

Human

**Source:**

Rabbit

**Isotype:**

IgG

**Applications:**

ELISA, WB, IHC

**Recommended dilutions:**

ELISA:1:5000, WB:1:500-1:2000, IHC:1:100-1:300

**Protein Background:****Gene ID:**

NCF1

**Uniprot**

P14598

**Synonyms:**

NCF1; NOXO2; SH3PXD1A; Neutrophil cytosol factor 1; NCF-1; 47 kDa autosomal chronic granulomatous disease protein; 47 kDa neutrophil oxidase factor; NCF-47K; Neutrophil NADPH oxidase factor 1; Nox organizer 2; Nox-organizing protein 2; SH3

**Immunogen:**

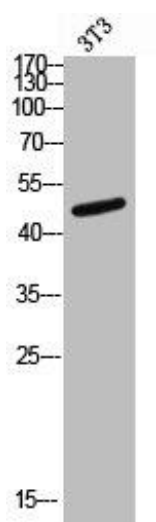
Synthesized peptide derived from human p47-phox around the phosphorylation site of S345.

**Storage:**

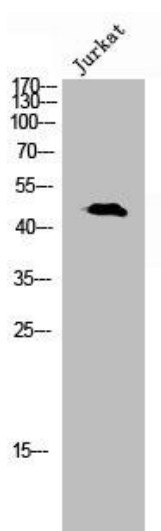
Liquid in PBS containing 50% glycerol, 0.5% BSA and 0.02% sodium azide.

## Product Images

---



Western blot analysis of 3T3 lysis using Phospho-p47-phox (S345) antibody.



Western Blot analysis of Jurkat cells using Phospho-p47-phox (S345) Polyclonal Antibody.