

GRIA4 Antibody



PACO07011

Product Information

Size:

50ug

Reactivity:

Human, Rat

Source:

Rabbit

Isotype:

IgG

Applications:

WB, IHC

Recommended dilutions:

WB:1:500-1:1000, IHC:1:200-1:500

Protein Background:

Gene ID:

GRIA4

Uniprot

P48058

Synonyms:

Glutamate receptor 4

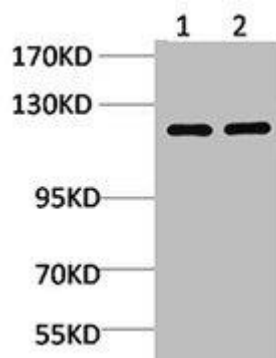
Immunogen:

Synthetic peptide.

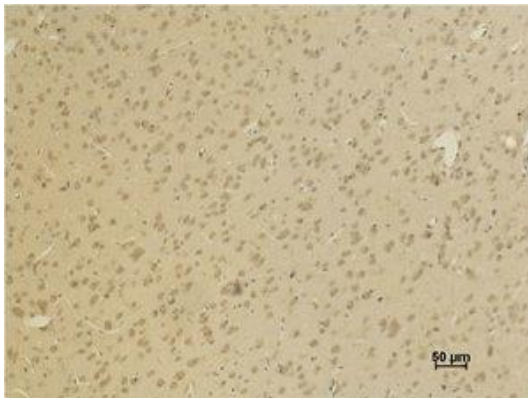
Storage:

PBS, pH 7.4, containing 0.02% sodium azide as Preservative and 50% Glycerol.

Product Images



Western blot analysis of 1) Human Brain Tissue, 2) Rat Brain Tissue using GluR4 Polyclonal Antibody.



Immunohistochemical analysis of paraffin-embedded Rat Brain Tissue using GluR4 Polyclonal Antibody.