

# NMBR Antibody



PACO07016

---

## Product Information

**Size:**

50ug

**Reactivity:**

Human, Mouse, Rat

**Source:**

Rabbit

**Isotype:**

IgG

**Applications:**

WB, IHC

**Recommended dilutions:**

WB:1:1000-1:2000, IHC:1:200-1:500

**Protein Background:**

**Gene ID:**

NMBR

**Uniprot**

P28336

**Synonyms:**

Neuromedin-B receptor

**Immunogen:**

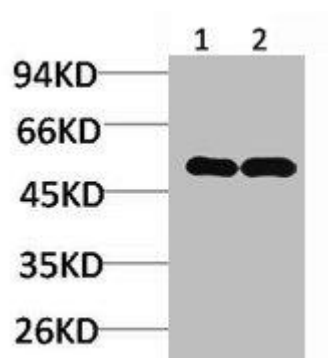
Synthetic peptide.

**Storage:**

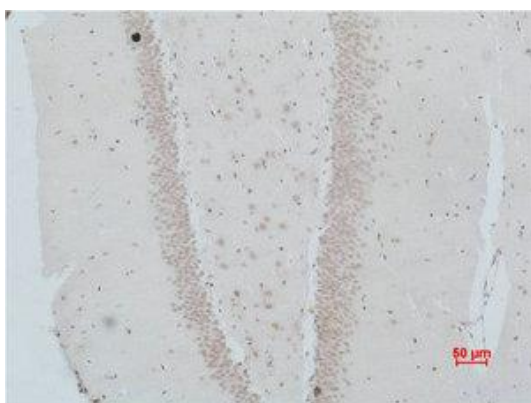
PBS, pH 7.4, containing 0.02% sodium azide as Preservative and 50% Glycerol.

## Product Images

---



Western blot analysis of 1) Human Brain Tissue, 2) Rat Brain Tissue using NMBR Polyclonal Antibody.



Immunohistochemical analysis of paraffin-embedded Rat Brain Tissue using NMBR Polyclonal Antibody.