

# IGFN1 Antibody



PACO07023

---

## Product Information

**Size:**

50ug

**Reactivity:**

Human, Mouse, Rat

**Source:**

Rabbit

**Isotype:**

IgG

**Applications:**

WB, IHC

**Recommended dilutions:**

WB:1:2000-1:5000, IHC:1:200-1:500

**Protein Background:**

**Gene ID:**

IGFN1

**Uniprot**

Q86VF2

**Synonyms:**

Immunoglobulin-like and fibronectin type III domain-containing protein 1

**Immunogen:**

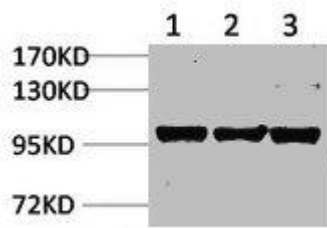
Recombinant Protein.

**Storage:**

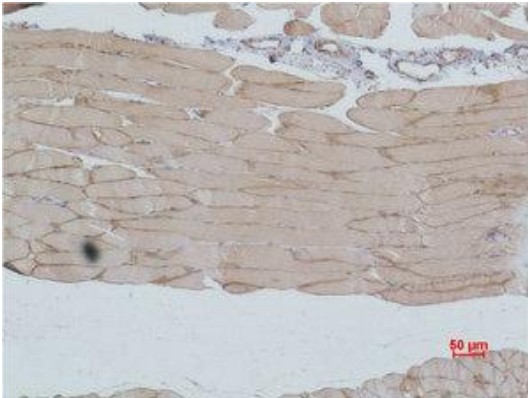
PBS, pH 7.4, containing 0.02% sodium azide as Preservative and 50% Glycerol.

## Product Images

---



Western blot analysis of 1) Pig Skeletal Muscle Tissue, 2) Rat Skeletal Muscle Tissue, 3) Rat Skeletal Muscle Tissue using IGFN1 Polyclonal Antibody.



Immunohistochemical analysis of paraffin-embedded Mouse Skeletal Muscle Tissue using IGFN1 Polyclonal Antibody.