

CACNG5 Antibody



PACO07025

Product Information

Size:

50ug

Reactivity:

Human, Mouse, Rat

Source:

Rabbit

Isotype:

IgG

Applications:

WB, IHC

Recommended dilutions:

WB:1:500-1:1000, IHC:1:100-1:200

Protein Background:

Gene ID:

CACNG5

Uniprot

Q9UF02

Synonyms:

Voltage-dependent calcium channel gamma-5 subunit

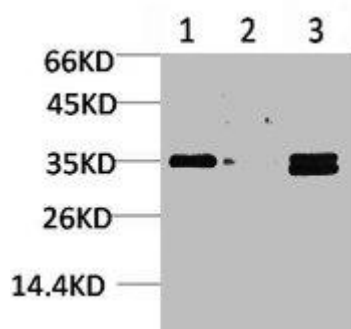
Immunogen:

Synthetic peptide.

Storage:

PBS, pH 7.4, containing 0.02% sodium azide as Preservative and 50% Glycerol.

Product Images



Western blot analysis of 1) Human Brain Tissue, 2) Mouse Brain Tissue, 3) Rat Brain Tissue using L-type Ca⁺⁺ CP gamma 5 Polyclonal Antibody.



Immunohistochemical analysis of paraffin-embedded Rat Brain Tissue using L-type Ca⁺⁺ CP gamma 5 Polyclonal Antibody.