

Histone H3 Antibody



PACO07029

Product Information

Size:

50ug

Reactivity:

Human, Mouse, Rat

Source:

Rabbit

Isotype:

IgG

Applications:

WB, IHC

Recommended dilutions:

WB:1:500-1:1000, IHC:1:200-1:500

Protein Background:

Gene ID:

HIST1H3A

Uniprot

P68431

Synonyms:

Histone H3.1

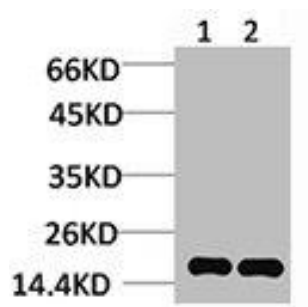
Immunogen:

Synthetic peptide.

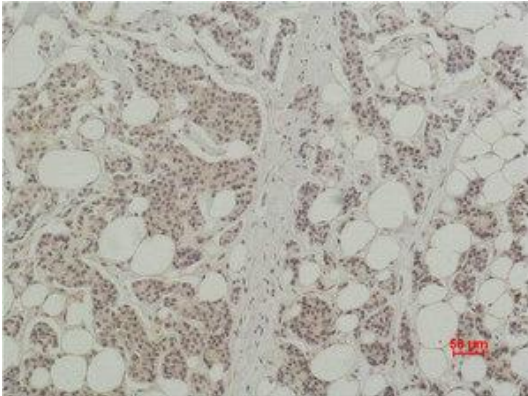
Storage:

PBS, pH 7.4, containing 0.02% sodium azide as Preservative and 50% Glycerol.

Product Images



Western blot analysis of 1) HeLa, 2) 3T3 using Histone H3 Polyclonal Antibody.



Immunohistochemical analysis of paraffin-embedded human Breast carcinoma using Histone H3 Polyclonal Antibody.