

RPS6KB1 Antibody



PACO07039

Product Information

Size:

50ug

Reactivity:

Human, Mouse, Rat

Source:

Rabbit

Isotype:

IgG

Applications:

WB, IHC

Recommended dilutions:

WB:1:1000-1:2000, IHC:1:200-1:500

Protein Background:

Gene ID:

RPS6KB1

Uniprot

P23443

Synonyms:

Ribosomal protein S6 kinase beta-1

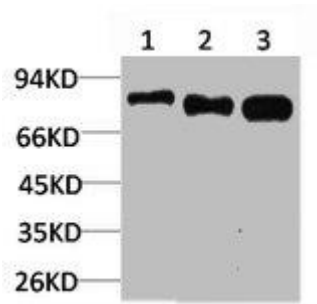
Immunogen:

Recombinant Protein.

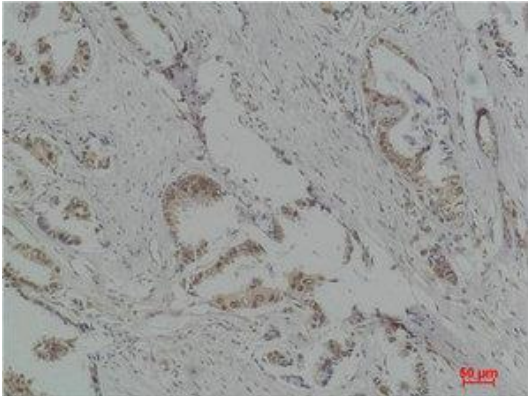
Storage:

PBS, pH 7.4, containing 0.02% sodium azide as Preservative and 50% Glycerol.

Product Images



Western blot analysis of 1) HeLa, 2) 3T3, 3) PC12 using p70 S6 kinase alpha Polyclonal Antibody.



Immunohistochemical analysis of paraffin-embedded Human Breast Carcinoma using p70 S6 kinase alpha Polyclonal Antibody.