

MAP2K1 Antibody



PACO07040

Product Information

Size:

50ug

Reactivity:

Human, Mouse, Rat

Source:

Rabbit

Isotype:

IgG

Applications:

WB, IHC

Recommended dilutions:

WB:1:1000-1:2000, IHC:1:100-1:200

Protein Background:

Gene ID:

MAP2K1

Uniprot

Q02750

Synonyms:

Dual specificity mitogen-activated protein kinase kinase 1

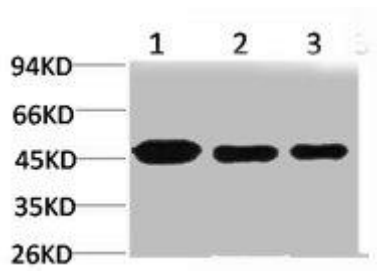
Immunogen:

Recombinant Protein.

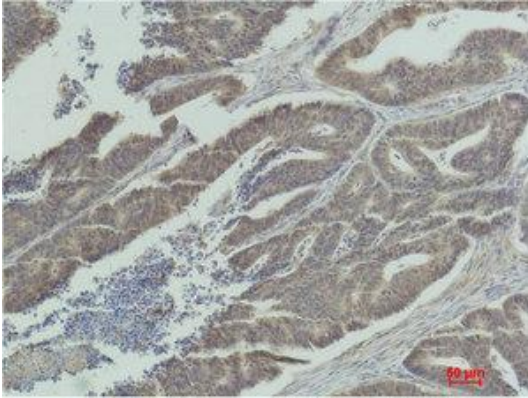
Storage:

PBS, pH 7.4, containing 0.02% sodium azide as Preservative and 50% Glycerol.

Product Images



Western blot analysis of 1) HeLa, 2) 3T3, 3) PC12 using MEK-1 Polyclonal Antibody.



Immunohistochemical analysis of paraffin-embedded Human Colon Carcinoma using MEK-1 Polyclonal Antibody.