

# Acetyl-XRCC6 (K542) Antibody



PACO07060

---

## Product Information

**Size:**

50ug

**Reactivity:**

Human

**Source:**

Rabbit

**Isotype:**

IgG

**Applications:**

ELISA, WB

**Recommended dilutions:**

ELISA:1:20000, WB:1:500-1:2000

**Protein Background:****Gene ID:**

XRCC6

**Uniprot**

P12956

**Synonyms:**

XRCC6; G22P1; X-ray repair cross-complementing protein 6; 5'-deoxyribose-5-phosphate lyase Ku70; 5'-dRP lyase Ku70; 70 kDa subunit of Ku antigen; ATP-dependent DNA helicase 2 subunit 1; ATP-dependent DNA helicase II 70 kDa subunit;

**Immunogen:**

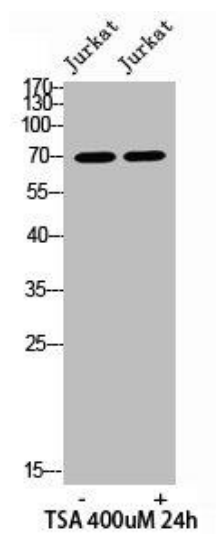
Synthesized peptide derived from the human Ku-70 around the acetylation site of K542.

**Storage:**

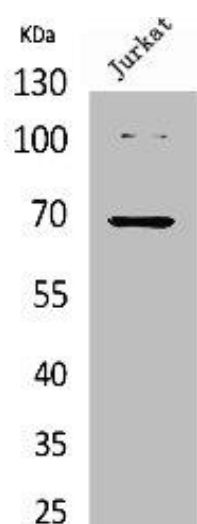
Liquid in PBS containing 50% glycerol, 0.5% BSA and 0.02% sodium azide.

## Product Images

---



Western blot analysis of JK lysis using Acetyl-Ku-70 (K542) antibody.



Western Blot analysis of Jurkat cells using Acetyl-Ku-70 (K542) Polyclonal Antibody.