

Phospho-MAPK14 (Y323) Antibody



PACO07077

Product Information

Size:

50ug

Reactivity:

Human, Mouse, Rat

Source:

Rabbit

Isotype:

IgG

Applications:

ELISA, WB, IHC

Recommended dilutions:

ELISA:1:5000, WB:1:500-1:2000, IHC:1:100-1:300

Protein Background:

Gene ID:

MAPK14

Uniprot

Q16539

Synonyms:

MAPK14; CSBP; CSBP1; CSBP2; CSPB1; MXI2; SAPK2A; Mitogen-activated protein kinase 14; MAP kinase 14; MAPK 14; Cytokine suppressive anti-inflammatory drug-binding protein; CSAID-binding protein; CSBP; MAP kinase MXI2; MAX-interacting protein

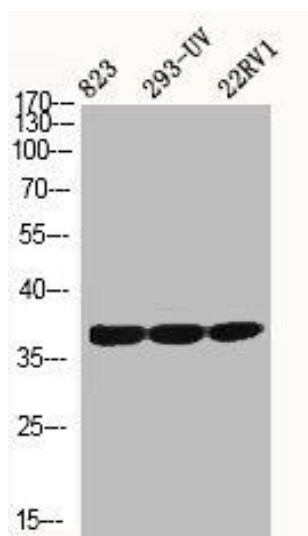
Immunogen:

Synthesized peptide derived from human p38 around the phosphorylation site of Y323.

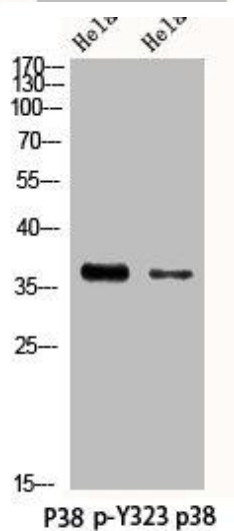
Storage:

Liquid in PBS containing 50% glycerol, 0.5% BSA and 0.02% sodium azide.

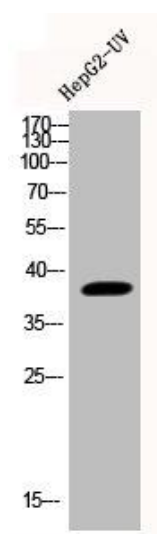
Product Images



Western Blot analysis of 823 293-UV 22RV1 cells using Phospho-p38 (Y323) Polyclonal Antibody.



Western Blot analysis of HELA using Phospho-p38 (Y323) Polyclonal Antibody.



Western Blot analysis of HEPG2-UV cells using Phospho-p38 (Y323) Polyclonal Antibody.