

Histone H3 Antibody



PACO07095

Product Information

Size:

50ug

Reactivity:

Human, Mouse, Rat

Source:

Rabbit

Isotype:

IgG

Applications:

ELISA, WB, IHC, IF

Recommended dilutions:

ELISA:1:20000, WB:1:500-1:2000,
IHC:1:100-1:300, IF:1:200-1:1000

Protein Background:**Gene ID:**

HIST1H3A/HIST2H3A/H3F3A

Uniprot

P68431/Q71DI3/P84243

Synonyms:

HIST1H3A; H3FA; HIST1H3B; H3FL; HIST1H3C; H3FC; HIST1H3D; H3FB; HIST1H3E; H3FD;
HIST1H3F; H3FI; HIST1H3G; H3FH; HIST1H3H; H3FK; HIST1H3I; H3FF; HIST1H3J; H3FJ;
Histone H3.1; Histone H3/a; Histone H3/b; Histone H3/c; Histone H3/d; Histone H3

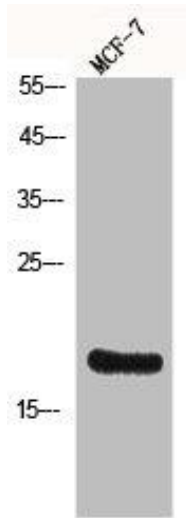
Immunogen:

Synthesized peptide derived from human Histone H3 around the non-phosphorylation site of S10.

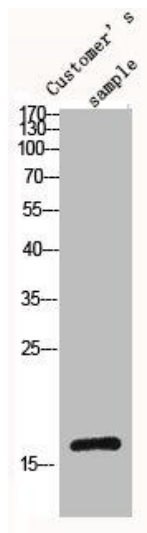
Storage:

Liquid in PBS containing 50% glycerol, 0.5% BSA and 0.02% sodium azide.

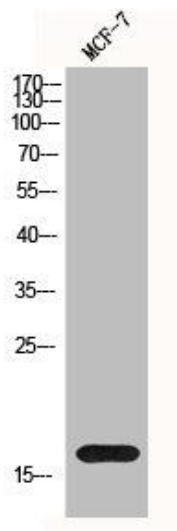
Product Images



Western Blot analysis of MCF7 cells using Histone H3 Polyclonal Antibody.



Western Blot analysis of customer's (cat sample) using Histone H3 Polyclonal Antibody.



Western Blot analysis of MCF-7 cells using Histone H3 Polyclonal Antibody.