

PACO07097

Product Information

Size:

50ug

Reactivity:

Human, Mouse, Rat

Source:

Rabbit

Isotype:

IgG

Applications:

ELISA, WB

Recommended dilutions:

ELISA:1:40000, WB:1:500-1:2000

Protein Background:**Gene ID:**

NFKBIA

Uniprot

P25963

Synonyms:

NFKBIA; IKBA; MAD3; NFKBI; NF- κ B inhibitor alpha; I κ B-alpha; I κ B-alpha; I κ B-alpha; Major histocompatibility complex enhancer-binding protein MAD3

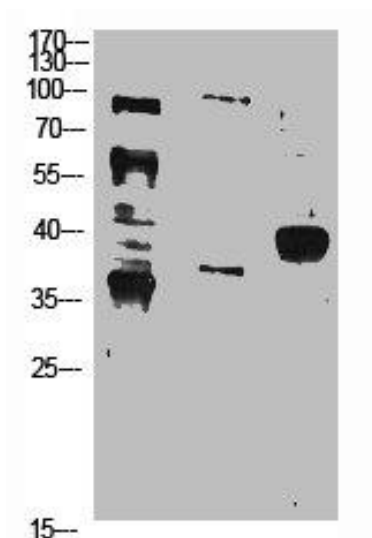
Immunogen:

Synthesized peptide derived from the N-terminal region of human I κ B-alpha; B- κ alpha; .

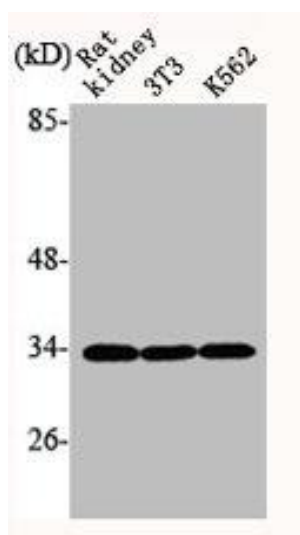
Storage:

Liquid in PBS containing 50% glycerol, 0.5% BSA and 0.02% sodium azide.

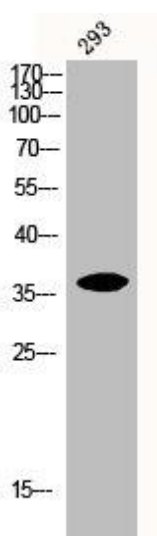
Product Images



Western Blot analysis of 293 K562 HELA cells using I kappa B- alpha Polyclonal Antibody.



Western Blot analysis of NIH-3T3 K562 RAT-KIDNEY cells using I kappa B- alpha Polyclonal Antibody.



Western Blot analysis of 293 cells using I kappa B- alpha Polyclonal Antibody.