

MAGEC2 Antibody



PACO07101

Product Information

Size:

50ug

Reactivity:

Human

Source:

Rabbit

Isotype:

IgG

Applications:

ELISA, WB

Recommended dilutions:

ELISA:1:5000, WB:1:500-1:2000

Protein Background:

Gene ID:

MAGEC2

Uniprot

Q9UBF1

Synonyms:

MAGEC2; HCA587; MAGEE1; Melanoma-associated antigen C2; Cancer/testis antigen 10; CT10; Hepatocellular carcinoma-associated antigen 587; MAGE-C2 antigen; MAGE-E1 antigen

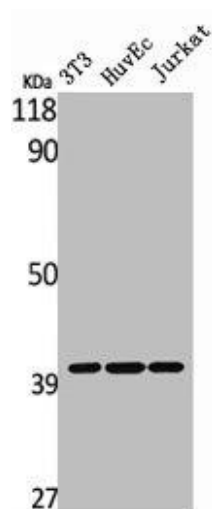
Immunogen:

Synthesized peptide derived from the Internal region of human MAGE-C2.

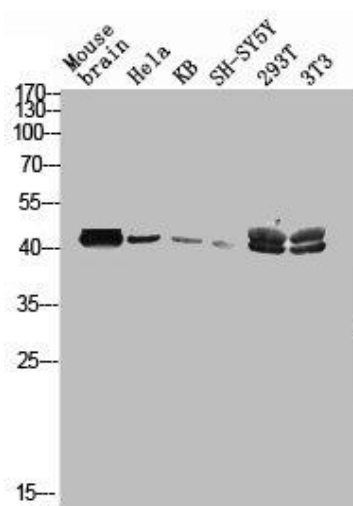
Storage:

Liquid in PBS containing 50% glycerol, 0.5% BSA and 0.02% sodium azide.

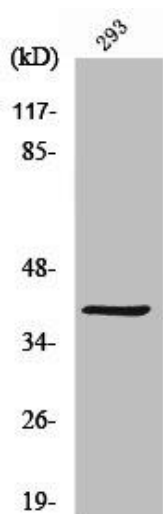
Product Images



Western Blot analysis of NIH-3T3 HuvEc Jurkat cells using MAGE-C2 Polyclonal Antibody.



Western blot analysis of mouse-brain HELA KB SH-SY5Y 293T 3T3 lysis using MAGE-C2 antibody.



Western Blot analysis of 293 cells using MAGE-C2 Polyclonal Antibody.