

# MAPK14 Antibody



PACO07110

---

## Product Information

**Size:**

50ug

**Reactivity:**

Human, Mouse, Rat

**Source:**

Rabbit

**Isotype:**

IgG

**Applications:**

ELISA, WB, IHC

**Recommended dilutions:**

ELISA:1:5000, WB:1:500-1:2000, IHC:1:100-1:300

**Protein Background:**

**Gene ID:**

MAPK14

**Uniprot**

Q16539

**Synonyms:**

MAPK14; CSBP; CSBP1; CSBP2; CSPB1; MXI2; SAPK2A; Mitogen-activated protein kinase 14; MAP kinase 14; MAPK 14; Cytokine suppressive anti-inflammatory drug-binding protein; CSAID-binding protein; CSBP; MAP kinase MXI2; MAX-interacting protein

**Immunogen:**

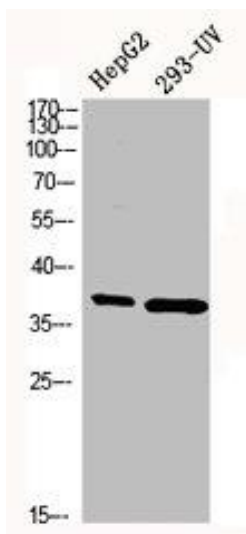
Synthesized peptide derived from human p38 around the non-phosphorylation site of T180/Y182.

**Storage:**

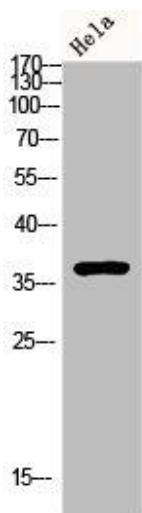
Liquid in PBS containing 50% glycerol, 0.5% BSA and 0.02% sodium azide.

## Product Images

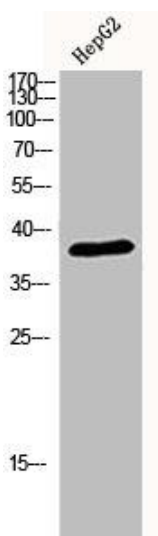
---



Western Blot analysis of HEPG3 293-UV cells using p38 Polyclonal Antibody.



Western blot analysis of HeLa lysis using p38 antibody.



Western Blot analysis of HEPG2 cells using p38 Polyclonal Antibody.