

PTEN Antibody



PACO07114

Product Information

Size:

50ug

Reactivity:

Human, Mouse, Rat

Source:

Rabbit

Isotype:

IgG

Applications:

ELISA, WB, IHC, IF

Recommended dilutions:

ELISA:1:40000, WB:1:500-1:2000,
IHC:1:100-1:300, IF:1:200-1:1000

Protein Background:

Gene ID:

PTEN

Uniprot

P60484

Synonyms:

PTEN; MMAC1; TEP1; Phosphatidylinositol 3; 4,5-trisphosphate 3-phosphatase and dual-specificity protein phosphatase PTEN; Mutated in multiple advanced cancers 1; Phosphatase and tensin homolog

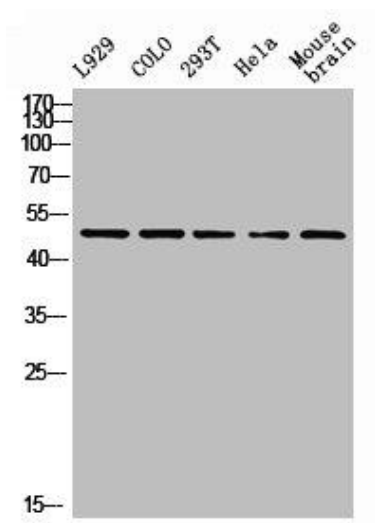
Immunogen:

Synthesized peptide derived from human PTEN around the non-phosphorylation site of S385.

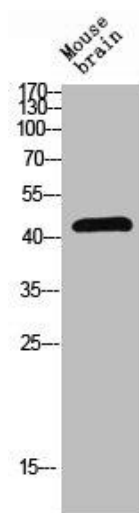
Storage:

Liquid in PBS containing 50% glycerol, 0.5% BSA and 0.02% sodium azide.

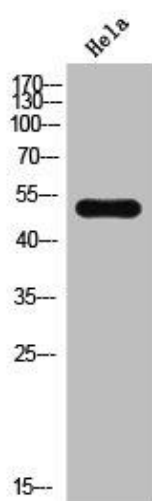
Product Images



Western Blot analysis of L929 COLO 293T HELA MOUSE-brain cells using PTEN Polyclonal Antibody.



Western blot analysis of mouse-brain lysis using PTEN antibody.



Western Blot analysis of HeLa cells using PTEN Polyclonal Antibody.