

CD34 Antibody



PACO07142

Product Information

Size:

50ug

Reactivity:

Human, Mouse

Source:

Rabbit

Isotype:

IgG

Applications:

ELISA, WB

Recommended dilutions:

ELISA:1:10000, WB:1:500-1:2000

Protein Background:

Gene ID:

CD34

Uniprot

P28906

Synonyms:

CD34; Hematopoietic progenitor cell antigen CD34; CD antigen CD34

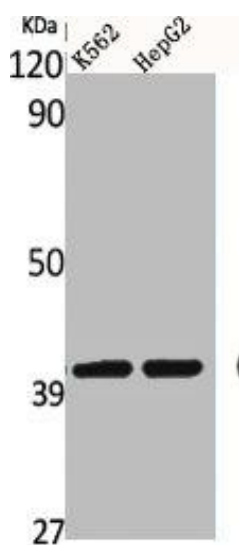
Immunogen:

Synthesized peptide derived from the Internal region of human CD34.

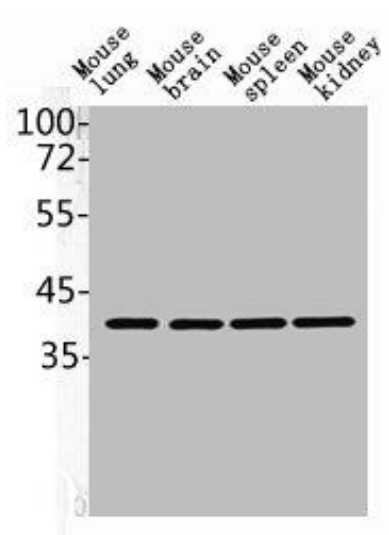
Storage:

Liquid in PBS containing 50% glycerol, 0.5% BSA and 0.02% sodium azide.

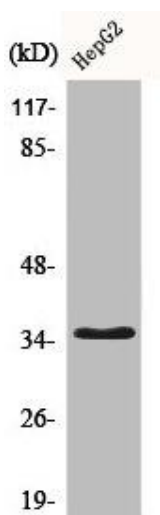
Product Images



Western Blot analysis of K562 HepG2 cells using CD34 Polyclonal Antibody.



mouse-lung mouse-brain mouse-spleen mouse-kidney.



Western Blot analysis of HepG2 cells using CD34 Polyclonal Antibody.