

DUSP1/DUSP4 Antibody



PACO07149

Product Information

Size:

50ug

Reactivity:

Human, Mouse, Rat

Source:

Rabbit

Isotype:

IgG

Applications:

ELISA, WB, IHC

Recommended dilutions:

ELISA:1:20000, WB:1:500-1:2000,
IHC:1:100-1:300

Protein Background:**Gene ID:**

DUSP1/DUSP4

Uniprot

P28562/Q13115

Synonyms:

DUSP1; CL100; MKP1; PTPN10; VH1; Dual specificity protein phosphatase 1; Dual specificity protein phosphatase hVH1; Mitogen-activated protein kinase phosphatase 1; MAP kinase phosphatase 1; MKP-1; Protein-tyrosine phosphatase CL100; DUSP4;

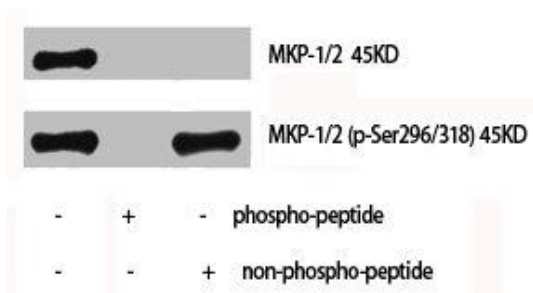
Immunogen:

Synthesized peptide derived from human MKP-1/2 around the non-phosphorylation site of S296/318.

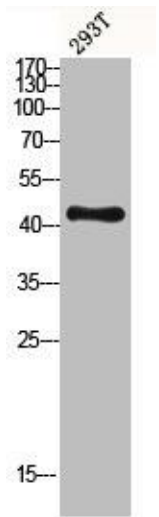
Storage:

Liquid in PBS containing 50% glycerol, 0.5% BSA and 0.02% sodium azide.

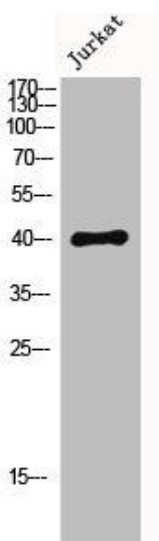
Product Images



Western Blot analysis of HeLa cells using MKP-1/2 Polyclonal Antibody.



Western blot analysis of 293T lysis using MKP-1/2 antibody.



Western Blot analysis of Jurkat cells using MKP-1/2 Polyclonal Antibody.