

KCNN2 Antibody



PACO07185

Product Information

Size:

50ug

Reactivity:

Human, Mouse, Rat

Source:

Rabbit

Isotype:

IgG

Applications:

ELISA, WB, IHC

Recommended dilutions:

ELISA:1:2000-1:10000, WB:1:1000-1:2000,
IHC-p:1:100-1:200

Protein Background:**Gene ID:**

KCNN2

Uniprot

Q6PJI0

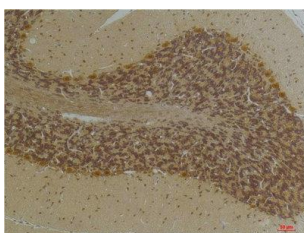
Synonyms:**Immunogen:**

Synthetic peptide.

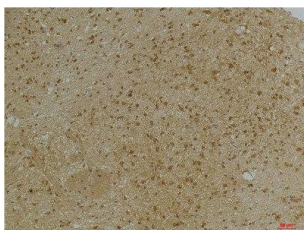
Storage:

Liquid in PBS containing 50% glycerol, 0.5% BSA and 0.02% sodium azide.

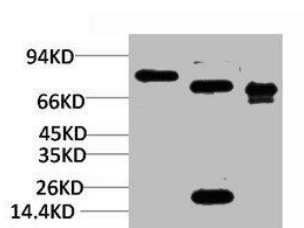
Product Images



Immunohistochemical analysis of paraffin-embedded Human BrainTissue using KCNN2(SK2) Rabbit pAb diluted at 1:200.



Immunohistochemical analysis of paraffin-embedded Mouse BrainTissue using KCNN2(SK2) Rabbit pAb diluted at 1:200.



Western blot analysis of 1) Rat BrainTissue, 2) Mouse Brain Tissue, 3) HepG2 with KCNN2(SK2) Rabbit pAb diluted at 1:2,000.