

# KCNIP1 Antibody



PACO07187

---

## Product Information

**Size:**

50ug

**Reactivity:**

Human, Mouse

**Source:**

Rabbit

**Isotype:**

IgG

**Applications:**

ELISA, IHC

**Recommended dilutions:**

ELISA:1:2000-1:10000, IHC-p:1:100-1:200

**Protein Background:**

**Gene ID:**

KCNIP1

**Uniprot**

Q9NZI2

**Synonyms:**

KCNIP1; KCHIP1; VABP; Kv channel-interacting protein 1; KCHIP1; A-type potassium channel modulatory protein 1; Potassium channel-interacting protein 1; Vesicle APC-binding protein

**Immunogen:**

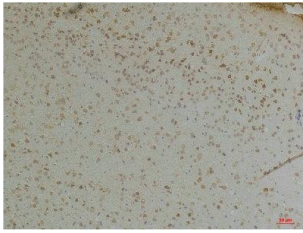
Synthetic peptide.

**Storage:**

Liquid in PBS containing 50% glycerol, 0.5% BSA and 0.02% sodium azide.

## Product Images

---



Immunohistochemical analysis of paraffin-embedded Mouse BrainTissue using KCHIP1 Rabbit pAb diluted at 1:200.