

KCNG3 Antibody



PACO07192

Product Information

Size:

50ug

Reactivity:

Human, Mouse, Rat

Source:

Rabbit

Isotype:

IgG

Applications:

ELISA, IHC

Recommended dilutions:

ELISA:1:2000-1:10000, IHC-p:1:100-1:200

Protein Background:

Gene ID:

KCNG3

Uniprot

Q8TAE7

Synonyms:

KCNG3; Potassium voltage-gated channel subfamily G member 3; Voltage-gated potassium channel subunit Kv10.1; Voltage-gated potassium channel subunit Kv6.3

Immunogen:

Synthetic peptide.

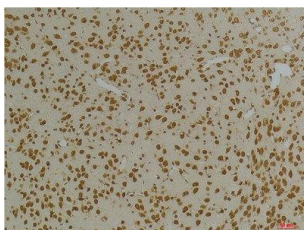
Storage:

Liquid in PBS containing 50% glycerol, 0.5% BSA and 0.02% sodium azide.

Product Images



Immunohistochemical analysis of paraffin-embedded Mouse BrainTissue using Kv10.1 Rabbit pAb diluted at 1:200.



Immunohistochemical analysis of paraffin-embedded Rat BrainTissue using Kv10.1 Rabbit pAb diluted at 1:200.