

MOB3A Antibody



PACO07200

Product Information

Size:

50ug

Reactivity:

Human, Mouse

Source:

Rabbit

Isotype:

IgG

Applications:

ELISA, WB, IHC

Recommended dilutions:

ELISA:1:10000, WB:1:500-1:2000, IHC-
p:1:100-1:300

Protein Background:**Gene ID:**

MOB3A

Uniprot

Q96BX8

Synonyms:

MOB3A; MOBKL2A; MOB kinase activator 3A; MOB-LAK; Mob1 homolog 2A; Mps one binder kinase activator-like 2A; MOB3B; MOBKL2B; MOB kinase activator 3B; Mob1 homolog 2b; Mps one binder kinase activator-like 2B

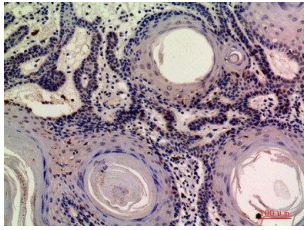
Immunogen:

Synthesized peptide derived from the N-terminal region of human Mob3A/B. at AA range: 1-80.

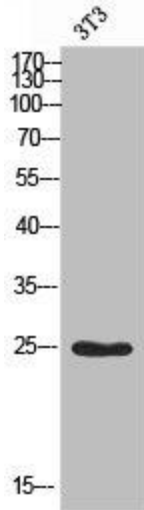
Storage:

Liquid in PBS containing 50% glycerol, 0.5% BSA and 0.02% sodium azide.

Product Images



Immunohistochemical analysis of paraffin-embedded human-skin, antibody was diluted at 1:200.



Western blot analysis of 3T3 using Mob3A/B antibody. Secondary antibody was diluted at 1:20000.