

# PODXL2 Antibody



PACO07211

---

## Product Information

**Size:**

50ug

**Reactivity:**

Human

**Source:**

Rabbit

**Isotype:**

IgG

**Applications:**

ELISA, WB

**Recommended dilutions:**

ELISA:1:10000, WB:1:500-1:2000

**Protein Background:**

**Gene ID:**

PODXL2

**Uniprot**

Q9NZ53

**Synonyms:**

PODXL2; Podocalyxin-like protein 2; Endoglycan

**Immunogen:**

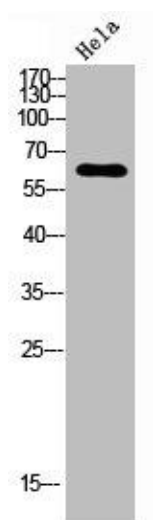
Synthesized peptide derived from the Internal region of human Endoglycan.

**Storage:**

Liquid in PBS containing 50% glycerol, 0.5% BSA and 0.02% sodium azide.

## Product Images

---



Western blot analysis of HeLa using Endoglycan antibody. Secondary antibody was diluted at 1:20000.