

# KCNK3 Antibody



PACO07214

---

## Product Information

**Size:**

50ug

**Reactivity:**

Human, Mouse, Rat

**Source:**

Rabbit

**Isotype:**

IgG

**Applications:**

ELISA, WB

**Recommended dilutions:**

ELISA:1:10000, WB:1:500-1:2000

**Protein Background:****Gene ID:**

KCNK3

**Uniprot**

O14649

**Synonyms:**

KCNK3; TASK; TASK1; Potassium channel subfamily K member 3; acid, sensitive potassium channel protein TASK-1; TWIK-related acid, sensitive K(+) channel 1; Two pore potassium channel KT3.1; Two pore K(+) channel KT3.1

**Immunogen:**

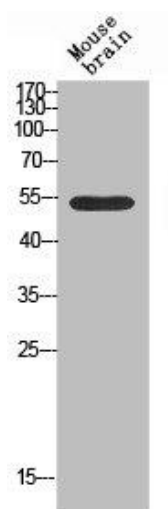
Synthesized peptide derived from the N-terminal region of human TASK-1.

**Storage:**

Liquid in PBS containing 50% glycerol, 0.5% BSA and 0.02% sodium azide.

## Product Images

---



Western blot analysis of mouse-brain using TASK-1 antibody. Antibody was diluted at 1:500. Secondary antibody was diluted at 1:20000.