

# NODAL Antibody



PACO07232

---

## Product Information

**Size:**

50ug

**Reactivity:**

Human, Mouse, Rat

**Source:**

Rabbit

**Isotype:**

IgG

**Applications:**

ELISA, WB, IHC

**Recommended dilutions:**

ELISA:1:10000, WB:1:500-1:2000, IHC-  
p:1:100-1:300

**Protein Background:****Gene ID:**

NODAL

**Uniprot**

Q96S42

**Synonyms:**

NODAL; Nodal homolog

**Immunogen:**

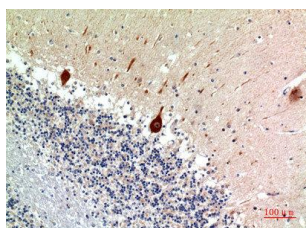
Synthesized peptide derived from the C-terminal region of human Nodal.

**Storage:**

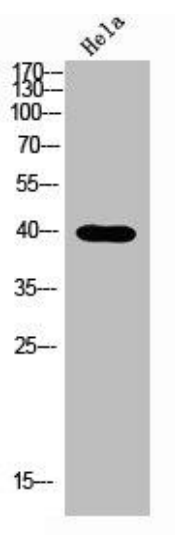
Liquid in PBS containing 50% glycerol, 0.5% BSA and 0.02% sodium azide.

## Product Images

---



Immunohistochemical analysis of paraffin-embedded human-brain, antibody was diluted at 1:100.



Western blot analysis of HeLa lysis using NODAL antibody. Secondary antibody was diluted at 1:20000.