

PGLYRP1 Antibody



PACO07234

Product Information

Size:

50ug

Reactivity:

Human

Source:

Rabbit

Isotype:

IgG

Applications:

ELISA, WB

Recommended dilutions:

ELISA:1:10000, WB:1:500-1:2000

Protein Background:

Gene ID:

PGLYRP1

Uniprot

O75594

Synonyms:

PGLYRP1; PGLYRP; PGRP; TNFSF3L; SBBI68; Peptidoglycan recognition protein 1; Peptidoglycan recognition protein short; PGRP-S

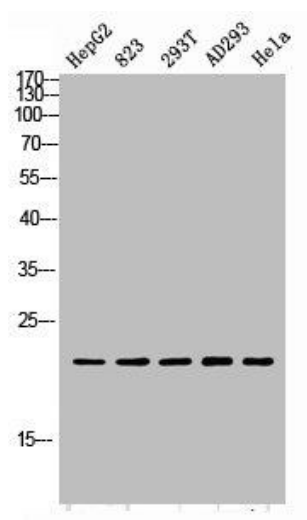
Immunogen:

Synthesized peptide derived from the Internal region of human PGLYRP1.

Storage:

Liquid in PBS containing 50% glycerol, 0.5% BSA and 0.02% sodium azide.

Product Images



Western blot analysis of HepG2 823-AV 293T AD293 HeLa lysis using PGLYRP1 antibody. Antibody was diluted at 1:1000. Secondary antibody was diluted at 1:20000.