

# Acetyl-TAL1/2 (Lys221/222, Lys36/37) Antibody



PACO07242

---

## Product Information

**Size:**

50ug

**Reactivity:**

Human, Mouse, Rat

**Source:**

Rabbit

**Isotype:**

IgG

**Applications:**

ELISA, WB

**Recommended dilutions:**

ELISA:1:10000, WB:1:500-1:2000

**Protein Background:****Gene ID:**

TAL1

**Uniprot**

P17542

**Synonyms:****Immunogen:**

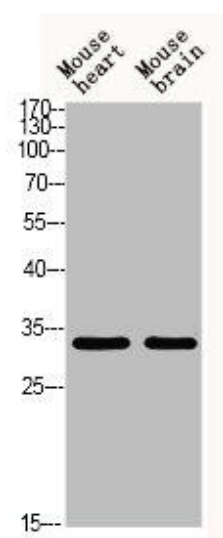
Synthesized peptide derived from human TAL1/2 around the acetylation site of K221.

**Storage:**

Liquid in PBS containing 50% glycerol, 0.5% BSA and 0.02% sodium azide.

## Product Images

---



Western blot analysis of MOUSE-HEART MOUSE-BRAIN using Acetyl-TAL1/2 (K221/K222/K36/K37) antibody. Antibody was diluted at 1:500. Secondary antibody was diluted at 1:20000.