

Acetyl-E2F3 (Lys168) Antibody

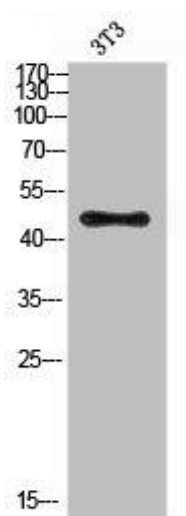


PACO07246

Product Information

Size: 50ug	Protein Background:
Reactivity: Human, Mouse, Rat	Gene ID: E2F3
Source: Rabbit	Uniprot O00716
Isotype: IgG	Synonyms: E2F3 KIAA0075
Applications: ELISA, WB	Immunogen: Synthetic peptide from human protein at AA range: 130-200.
Recommended dilutions: ELISA:1:10000, WB:1:500-1:10000	Storage: PBS, pH 7.4, containing 0.02% sodium azide as Preservative and 50% Glycerol.

Product Images



Western Blot analysis of 3T3 cells using Antibody diluted at 500. Secondary antibody was diluted at 1:20000.