

PACO07253

Product Information

Size:

50ug

Reactivity:

Human

Source:

Rabbit

Isotype:

IgG

Applications:

ELISA, WB

Recommended dilutions:

ELISA:1:10000-1:20000, WB:1:500-1:2000

Protein Background:**Gene ID:**

SELE

Uniprot

P16581

Synonyms:

selectin E

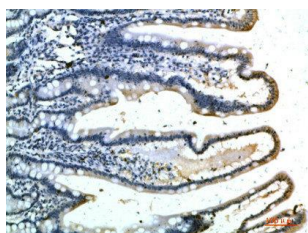
Immunogen:

Synthesized peptide derived from E-Selectin . at AA range: INTERNAL.

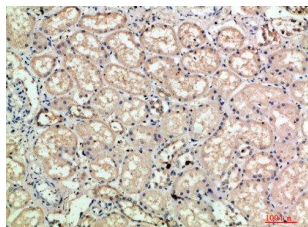
Storage:

Liquid in PBS containing 50% glycerol, 0.5% BSA and 0.02% sodium azide.

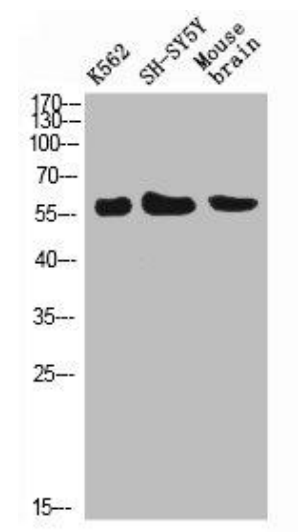
Product Images



Immunohistochemical analysis of paraffin-embedded human-colon, antibody was diluted at 1:200.



Immunohistochemical analysis of paraffin-embedded human-kidney, antibody was diluted at 1:200.



Western Blot analysis of K562 SH-SY5Y mouse-brain cells using E-Selectin Polyclonal Antibody diluted at 1:500. Secondary antibody was diluted at 1:20000.