

HSPA1A Antibody



PACO07255

Product Information

Size:

50ug

Reactivity:

Human

Source:

Rabbit

Isotype:

IgG

Applications:

ELISA, WB

Recommended dilutions:

ELISA:1:10000-1:20000, WB:1:500-1:2000

Protein Background:

Gene ID:

HSPA1A

Uniprot

P08107

Synonyms:

heat shock 70kDa protein 1A; heat shock 70kDa protein 1B

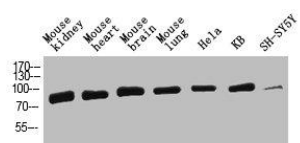
Immunogen:

Synthesized peptide derived from HSP70 at AA range: 561-610.

Storage:

Liquid in PBS containing 50% glycerol, 0.5% BSA and 0.02% sodium azide.

Product Images



Western Blot analysis of mouse-kidney mouse-heart mouse-brain mouse-lung HeLa KB SH-SY5Y cells using HSP70 Polyclonal Antibody diluted at 1:2000. Secondary antibody was diluted at 1:20000.