

# COL1A2/COL1A1 Antibody



PACO07262

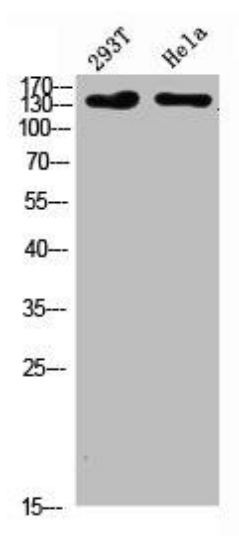
---

## Product Information

<b>Size:</b> 50ug	<b>Protein Background:</b>
<b>Reactivity:</b> Human, Mouse, Rat	<b>Gene ID:</b> COL1A2/COL1A1
<b>Source:</b> Rabbit	<b>Uniprot</b> P08123/P02452
<b>Isotype:</b> IgG	<b>Synonyms:</b> collagen, type I, alpha 2
<b>Applications:</b> ELISA, WB	<b>Immunogen:</b> Synthesized peptide derived from Collagen I . at AA range: 1200-1217.
<b>Recommended dilutions:</b> ELISA:1:10000-1:20000, WB:1:500-1:2000	<b>Storage:</b> Liquid in PBS containing 50% glycerol, 0.5% BSA and 0.02% sodium azide.

## Product Images

---



Western Blot analysis of 293T HeLa cells using Collagen I Polyclonal Antibody diluted at 1:500. Secondary antibody was diluted at 1:20000.