

MIA2 Antibody

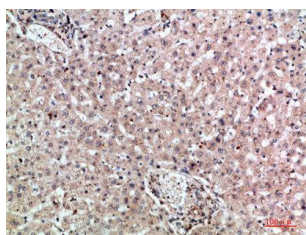


PACO07267

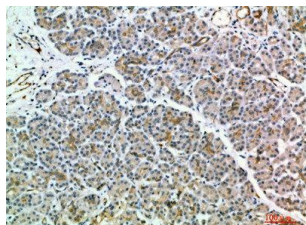
Product Information

Size: 50ug	Protein Background:
Reactivity: Human	Gene ID: MIA2
Source: Rabbit	Uniprot Q96PC5
Isotype: IgG	Synonyms: Melanoma inhibitory activity protein 2
Applications: ELISA, WB	Immunogen: Synthesized peptide derived from MIA2 at AA range: 361-410.
Recommended dilutions: ELISA:1:10000-1:20000, WB:1:500-1:2000	Storage: Liquid in PBS containing 50% glycerol, 0.5% BSA and 0.02% sodium azide.

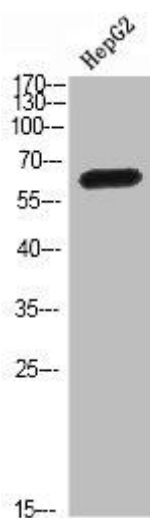
Product Images



Immunohistochemical analysis of paraffin-embedded human-liver, antibody was diluted at 1:200.



Immunohistochemical analysis of paraffin-embedded human-pancreas, antibody was diluted at 1:200.



Western Blot analysis of HEPG2 cells using MIA2 Polyclonal Antibody diluted at 1:500. Secondary antibody was diluted at 1:20000.