

COL28A1 Antibody



PACO07271

Product Information

Size:

50ug

Reactivity:

Human, Mouse

Source:

Rabbit

Isotype:

IgG

Applications:

ELISA, WB

Recommended dilutions:

ELISA:1:10000-1:20000, WB:1:500-1:2000

Protein Background:

Gene ID:

COL28A1

Uniprot

Q2UY09

Synonyms:

Collagen alpha-1(XXVIII) chain

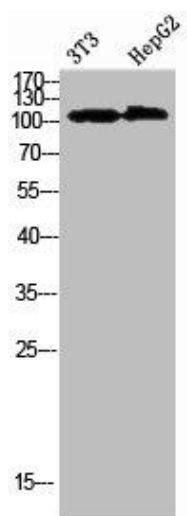
Immunogen:

Synthesized peptide derived from Collagen α -1(XXVIII) Polyclonal Antibody at AA range: 111-160.

Storage:

Liquid in PBS containing 50% glycerol, 0.5% BSA and 0.02% sodium azide.

Product Images



Western Blot analysis of 3T3 HEPG2 cells using Collagen alpha-1(XVIIII) Polyclonal Antibody diluted at 1:1000. Secondary antibody was diluted at 1:20000.