

NANOS1 Antibody



PACO07274

Product Information

Size:

50ug

Reactivity:

Human

Source:

Rabbit

Isotype:

IgG

Applications:

ELISA, WB

Recommended dilutions:

ELISA:1:10000-1:20000, WB:1:500-1:2000

Protein Background:

Gene ID:

NANOS1

Uniprot

Q8WY41

Synonyms:

Nanos homolog 1 (NOS-1) (EC_Rep1a)

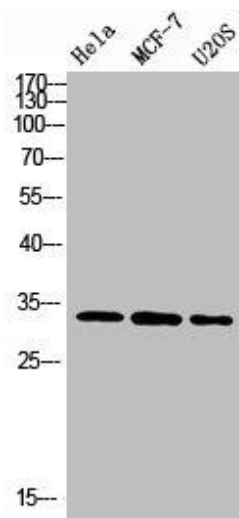
Immunogen:

Synthesized peptide derived from Nanos Homologue 1 (NANOS1) at AA range: 151-200.

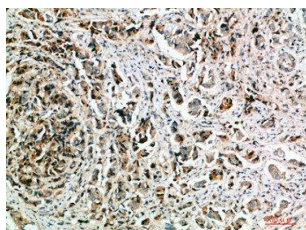
Storage:

Liquid in PBS containing 50% glycerol, 0.5% BSA and 0.02% sodium azide.

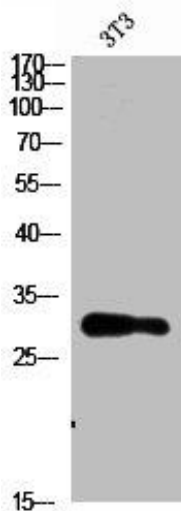
Product Images



Western Blot analysis of various cells using Antibody diluted at 1:1000. Secondary antibody was diluted at 1:20000.



Immunohistochemical analysis of paraffin-embedded human-breast-cancer, antibody was diluted at 1:200.



Western Blot analysis of 3T3 cells using Nanos Homologue 1 (NANOS1) Polyclonal Antibody diluted at 1:1500. Secondary antibody was diluted at 1:20000.