

# MBL2 Antibody



PACO07286

---

## Product Information

**Size:**

50ug

**Reactivity:**

Human, Mouse

**Source:**

Rabbit

**Isotype:**

IgG

**Applications:**

ELISA, WB

**Recommended dilutions:**

ELISA:1:10000, WB:1:500-1:10000

**Protein Background:**

**Gene ID:**

MBL2

**Uniprot**

P11226

**Synonyms:**

MBL2 COLEC1 MBL

**Immunogen:**

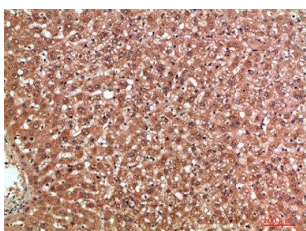
Synthetic peptide from human protein at AA range: 21-70.

**Storage:**

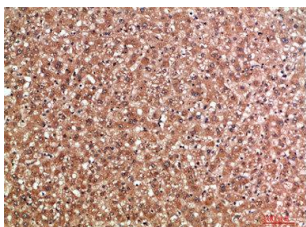
PBS, pH 7.4, containing 0.02% sodium azide as Preservative and 50% Glycerol.

## Product Images

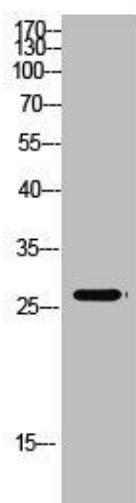
---



Immunohistochemical analysis of paraffin-embedded human-liver, antibody was diluted at 1:200.



Immunohistochemical analysis of paraffin-embedded human-liver, antibody was diluted at 1:200.



Western Blot analysis of mouse-kidney cells using Antibody diluted at 500. Secondary antibody was diluted at 1:20000.