

# ZFP91 Antibody



PACO07289

---

## Product Information

**Size:**

50ug

**Reactivity:**

Human, Mouse, Rat

**Source:**

Rabbit

**Isotype:**

IgG

**Applications:**

ELISA, WB

**Recommended dilutions:**

ELISA:1:10000, WB:1:500-1:10000

**Protein Background:**

**Gene ID:**

ZFP91

**Uniprot**

Q96JP5

**Synonyms:**

ZFP91 ZNF757 FKSG11

**Immunogen:**

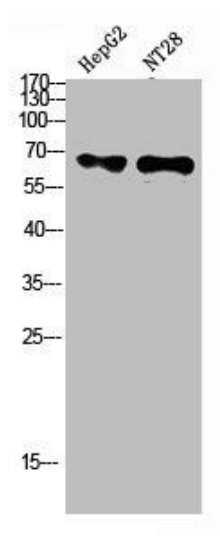
Synthetic peptide from human protein at AA range: 401-450.

**Storage:**

PBS, pH 7.4, containing 0.02% sodium azide as Preservative and 50% Glycerol.

## Product Images

---



Western Blot analysis of hepg2, NT28 cells using Antibody diluted at 500. Secondary antibody was diluted at 1:20000.