

COL25A1 Antibody



PACO07290

Product Information

Size:

50ug

Reactivity:

Human, Mouse

Source:

Rabbit

Isotype:

IgG

Applications:

ELISA, WB

Recommended dilutions:

ELISA:1:10000, WB:1:500-1:10000

Protein Background:**Gene ID:**

COL25A1

Uniprot

Q9BXS0

Synonyms:

COL25A1

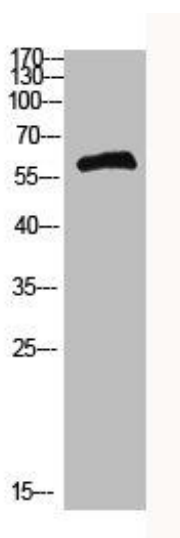
Immunogen:

Synthetic peptide from human protein at AA range: 101-150.

Storage:

PBS, pH 7.4, containing 0.02% sodium azide as Preservative and 50% Glycerol.

Product Images



Western Blot analysis of HEPG2 cells using Antibody diluted at 500.
Secondary antibody was diluted at 1:20000.