

# CACTIN Antibody



PACO07291

---

## Product Information

**Size:**

50ug

**Reactivity:**

Human, Mouse, Rat

**Source:**

Rabbit

**Isotype:**

IgG

**Applications:**

ELISA, WB

**Recommended dilutions:**

ELISA:1:10000, WB:1:500-1:10000

**Protein Background:**

**Gene ID:**

CACTIN

**Uniprot**

Q8WUQ7

**Synonyms:**

CACTIN C19orf29

**Immunogen:**

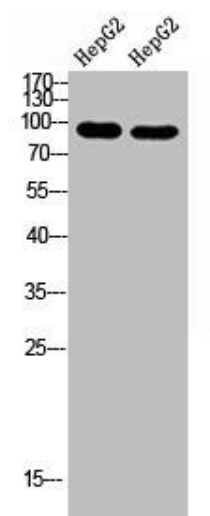
Synthetic peptide from human protein at AA range: 141-190.

**Storage:**

PBS, pH 7.4, containing 0.02% sodium azide as Preservative and 50% Glycerol.

## Product Images

---



Western Blot analysis of hepg2 cells using Antibody diluted at 1000. Secondary antibody was diluted at 1:20000.