

HLA-A Antibody



PACO07298

Product Information

Size:

50ug

Reactivity:

Human

Source:

Rabbit

Isotype:

IgG

Applications:

ELISA, WB

Recommended dilutions:

ELISA:1:10000, WB:1:500-1:10000

Protein Background:**Gene ID:**

HLA-A

Uniprot

P01891/P01892/P04439/P05534/P10314/P10316/P13746/P16189/P18462/P30443/P30450/P30453/P30455/P30456/P30457/P30512/Q09160

Synonyms:

HLA-A HLAA

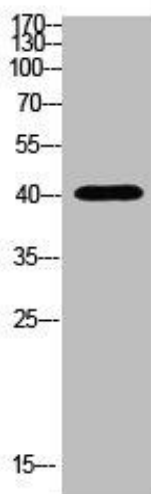
Immunogen:

Synthetic peptide from human protein at AA range: 220-270.

Storage:

PBS, pH 7.4, containing 0.02% sodium azide as Preservative and 50% Glycerol.

Product Images



Western Blot analysis of HELA cells using Antibody diluted at 500. Secondary antibody was diluted at 1:20000.