

RPS6KA2 Antibody



PACO07300

Product Information

Size:

50ug

Reactivity:

Human, Mouse

Source:

Rabbit

Isotype:

IgG

Applications:

ELISA, WB

Recommended dilutions:

ELISA:1:10000, WB:1:500-1:10000

Protein Background:

Gene ID:

RPS6KA2

Uniprot

Q15349

Synonyms:

RPS6KA2 MAPKAPK1C RSK3

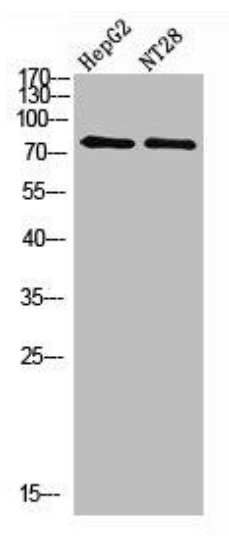
Immunogen:

Synthetic peptide from human protein at AA range: 330-400.

Storage:

PBS, pH 7.4, containing 0.02% sodium azide as Preservative and 50% Glycerol.

Product Images



Western Blot analysis of hepg2, NT28 cells using Antibody diluted at 500. Secondary antibody was diluted at 1:20000.