

PACO07303

---

## Product Information

**Size:**

50ug

**Reactivity:**

Human, Mouse, Rat

**Source:**

Rabbit

**Isotype:**

IgG

**Applications:**

ELISA, WB, IHC

**Recommended dilutions:**

ELISA:1:10000, WB:1:500-1:2000, IHC-  
p:1:100-1:300

**Protein Background:****Gene ID:**

NFKBIA

**Uniprot**

P25963

**Synonyms:**

NF- $\kappa$ B inhibitor alpha (I- $\kappa$ B-alpha) (I $\kappa$ B-alpha) (I $\kappa$ B $\alpha$ ) (Major histocompatibility complex enhancer-binding protein MAD3)

**Immunogen:**

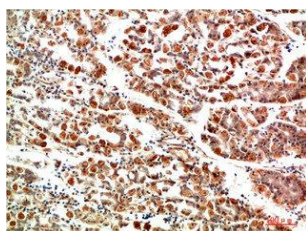
Recombinant Protein of I $\kappa$ B  $\alpha$ ; .

**Storage:**

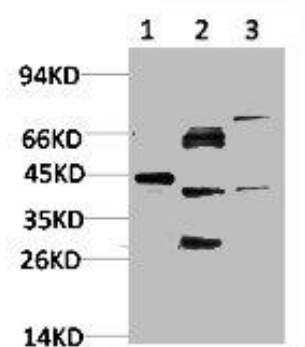
PBS, pH 7.4, containing 0.02% sodium azide as Preservative and 50% Glycerol.

## Product Images

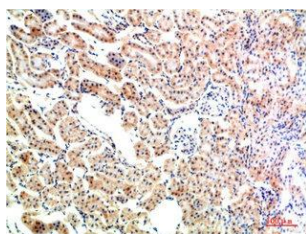
---



Immunohistochemical analysis of paraffin-embedded Human Stomach Tissue using IκB alpha Rabbit pAb diluted at 1:200.



Western blot analysis of 1) HeLa Cell Lysate, 2)PC12 Cell Lysate, 3) 3T3 Cell Lysate using IκB alpha Rabbit pAb diluted at 1:1000.



Immunohistochemical analysis of paraffin-embedded Rat Kidney Tissue using IκB alpha Rabbit pAb diluted at 1:200.