

Phospho-MDM2 (Tyr394) Antibody



PACO07310

Product Information

Size:

50ug

Reactivity:

Human, Mouse

Source:

Rabbit

Isotype:

IgG

Applications:

ELISA, WB

Recommended dilutions:

ELISA:1:10000-1:20000, WB:1:500-1:2000

Protein Background:**Gene ID:**

MDM2

Uniprot

Q00987

Synonyms:

E3 ubiquitin-protein ligase Mdm2 (EC 6.3.2) (Double minute 2 protein) (Hdm2) (Oncoprotein Mdm2) (p53-binding protein Mdm2)

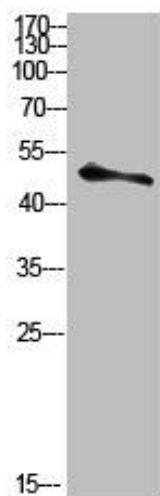
Immunogen:

Synthetic peptide from human protein at AA range: 330-410.

Storage:

PBS, pH 7.4, containing 0.02% sodium azide as Preservative and 50% Glycerol.

Product Images



Western blot analysis of HELA-UV Cell Lysate using antibody.